



www.adaa.org.uk

Aberdeen & District Angling Association

River Ythan

Methlick Beat Summary

How to get there (including beat limits & parking areas):

See Google Map on ADAA Website:

[Ythan River, ADAA beats 2013 – Google My Maps](#)

Detailed map:

See Map/s on ADAA Website:

[River Ythan - Aberdeen & District Angling Association \(adaa.org.uk\)](#)

Beat Video: N/A

Beat Limit descriptions:

North bank (left bank looking downstream):

From approx. 480yds above Methlick Road Bridge upstream for 3800 yds to edge of Badiebath Wood. North bank only. No dogs allowed at any time.

What 3 Words beat limits:

North bank (left bank looking downstream):

Upper Limit: ///resists.totally.unicorns

Lower Limit: ///noticing.slouched.streetcar

Parking area descriptions:

Parking area near Little Water burn

Layby on B9005

What 3 Words Parking areas:

Parking area near Little Water burn ///invent.zips.signature

Layby on B9005 ///treat.cans.paddocks



Named Pools (from top of beat downstream onwards):

**Crook A Peel
Megs Pot
Black Stank
Little Water
Gowkies Pot
Hughies Pot
Lochcam Pot**

Beat Summary

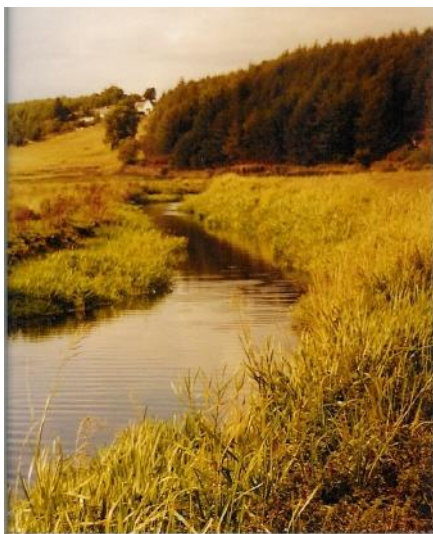
This beat on the middle Ythan starts a few hundred metres above the road bridge in Methlick and stretches upstream on the North bank for approximately 3500 metres.

For access to the lower part of the fishings, car parking is at the small lay-bys near the horse stable, parking for the upper section is off the public roadway just beyond the small bridge over the Little Water of Gight. (small burn)

The river, essentially a spate stream, is at this point, quite narrow, a mere 4 to 6 metres wide.

The upper part of the river, adjacent to and above the upper car park, is, as it meanders through the valley, somewhat sluggish.

The lower section, downstream from the Waterloo Bridge and the Little Water of Gight, is much livelier, with some attractive runs suitable for fly-fishing.



Slow pools adjacent to car park.



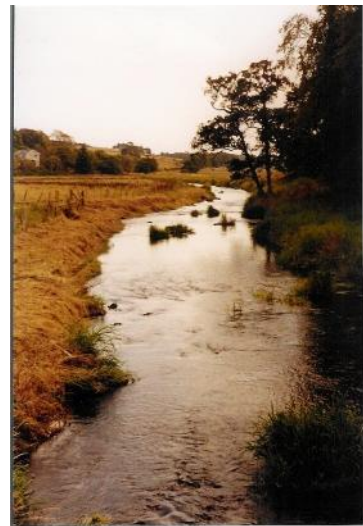
THE FISH

At the start of the season on the 11 February the beat normally holds over wintered finnock, sea trout kelts and salmon kelts. These sometimes remain in this part of the river until the end of March/early April.

Small numbers of clean sea trout can arrive in the beat as early as mid-July following raised water levels, more generally, however, they are later, following substantial spates in August and September.

Since the middle of the last century spring salmon in the Ythan have become quite rare, whilst previously they were quite numerous.

The river, however, still has a small run of salmon in September/October, again depending on spate conditions to encourage them to run.



View downstream from Waterloo Bridge.



View downstream to Vet's pool

WHEN TO FISH

The time of year – February and March, then from mid- July onwards.



Remember- following heavy rain the Ythan can often be fishable when it is impossible on the Don.

Wooded area at lower part of the beat.



BEST CONDITIONS

An overcast sky, during, or following spate conditions.

FISHING METHODS

Fly-fishing, spinning, and worming are all permitted.

Fly-fishing is not generally successful during the early part of the season; the water is cold and the finnock are not as active as they are later in the year. In the early spring most fish are caught whilst trotting a worm.

All salmon and sea trout kelts must be carefully released and returned.

At this time finnock are often in poor condition, and most are released.

From July to October, fly-fishing the streamy runs from the Waterloo Bridge near the car park, downstream to the bottom of the beat can be satisfying, and is best in a falling and clearing water.

A trout rod is all that is required, coupled with a floating line and 6 or 8lb cast.

Suitable flies include (size 14 or 12)

- Cinnamon and Gold
- Black Pennel
- Butcher
- Silver Stoats Tail

By early October most of the sea trout will be coloured and should be returned.

Silver finnock, however, can be in evidence until the end of the season.



The topmost part of the fishings.

The sluggish water in the top half of the beat is more suited to worm fishing or spinning, although spinning is somewhat tiresome, due to the repeated casting made necessary by the narrowness of the river.

Suitable lures include

- The Flying C
- Small Rapala
- Devon minnow.

Salmon normally appear in small numbers following any substantial spate in September and October, most being caught by worming, but occasionally by spinning or fly.